



INDOFINE Chemical Company, Inc.

121 Stryker Lane, Bldg. 30, Suite 1 • Hillsborough, NJ 08844 • U.S.A.

Phone: (908) 359-6778 • FAX: (908) 359-1179

website: www.indofinechemical.com

e-mail: chemical@indofinechemical.com

CERTIFICATE OF ANALYSIS

Cat No.: 19-761

Product: 2',6-DICHLORO-7-METHOXYISOFLAVONE

Lot Number: 0406140

Molecular Formula: C₁₆H₁₀Cl₂O₃

Molecular Weight: 321.16

Melting Point: 220-222°C

Appearance: White crystalline powder

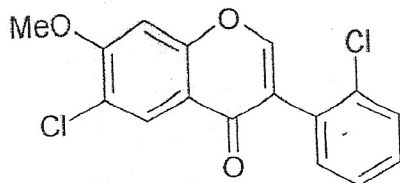
TLC: Hexane: Ethyl acetate (7:3)

Solubility: Clear solution in Chloroform

NMR Spectrum: Enclosed

Purity:(HPLC) 97.66%

Storage: Cool dry place





INDOFINE Chemical Company, Inc.

121 Stryker Lane, Bldg. 30, Suite 1 • Hillsborough, NJ 08844 • U.S.A.

Phone: (908) 359-6778 • FAX: (908) 359-1179

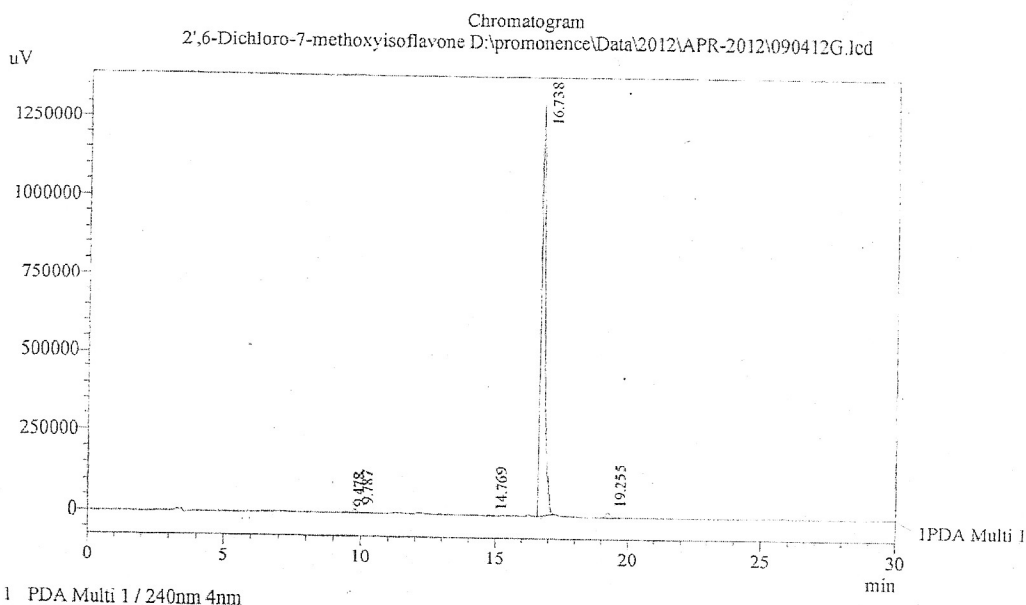
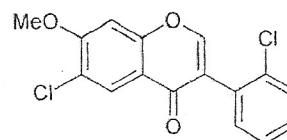
website: www.indofinechemical.com

e-mail: chemical@indofinechemical.com

HPLC ANALYSIS

Acquired by : Sanjeev
 Sample Name : 2',6-Dichloro-7-methoxyisoflavone
 Sample ID : Lot No:-0406140
 Injection Volume : 20 uL
 Data Filename : 090412G.lcd
 Method Filename : Linear Gradient.M.lcm
 Report Filename : BIOSYN.lcr
 Date Acquired : 4/9/2012 2:13:35 PM
 Data Processed : 4/9/2012 2:55:54 PM
 Column : LUNA C-18(2), (250mm x4.6mm 5.0μ)
 Flow : 1.000 mL/min.
 Mobile Phase : A(0.05% TFA in water) B(Acetonitrile)
 0.01 90 10
 12.0 10 90
 20.0 10 90
 23.0 90 10
 30.0 90 10

Catalog no.: 19-761
 Product name: 2',6-Dichloro-7-methoxyisoflavone
 Lot No.: 0406140



1 PDA Multi 1 / 240nm 4nm

PeakTable

Peak#	Name	Ret. Time	Area	Area %	Relative Retention Time
1	RT:9.478	9.478	17253	0.12	0.57
2	RT:9.787	9.787	86781	0.60	0.58
3	RT:14.769	14.769	23540	0.16	0.88
4	RT:16.738	16.738	14131339	97.66	1.00
5	RT:19.255	19.255	211217	1.46	1.15
Total			14470131	100.00	



INDOFINE Chemical Company, Inc.

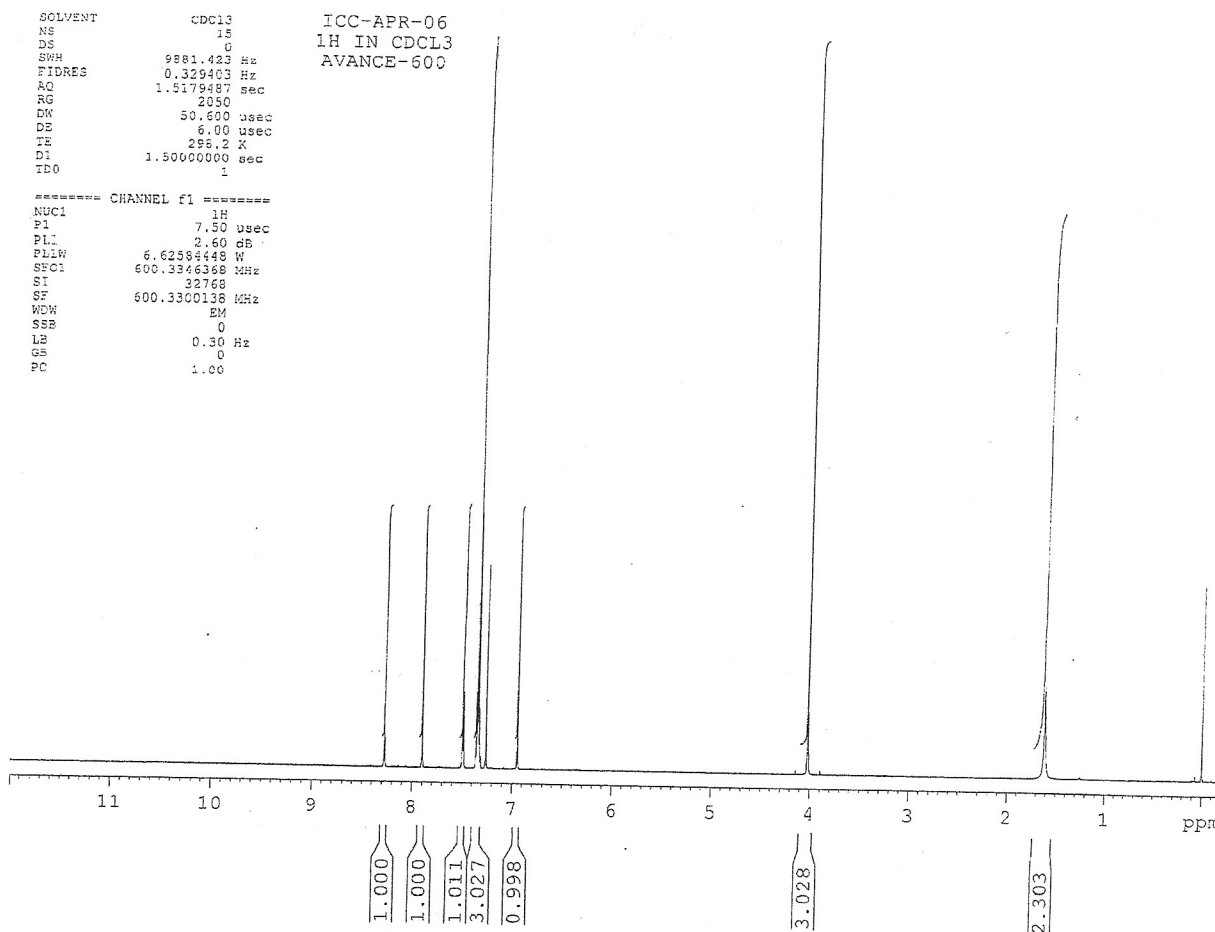
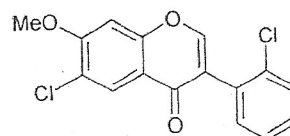
121 Stryker Lane, Bldg. 30, Suite 1 • Hillsborough, NJ 08844 • U.S.A.

Phone: (908) 359-6778 • FAX: (908) 359-1179

website: www.indofinechemical.com

e-mail: chemical@indofinechemical.com

Catalog no.: 19-761
Product name: 2',6-Dichloro-7-methoxyisoflavone
Lot No.: 0406140





INDOFINE Chemical Company, Inc.

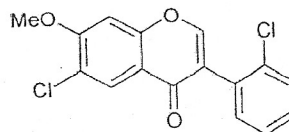
121 Stryker Lane, Bldg. 30, Suite 1 • Hillsborough, NJ 08844 • U.S.A.

Phone: (908) 359-6778 • FAX: (908) 359-1179

website: www.indofinechemical.com

e-mail: chemical@indofinechemical.com

Catalog no.: 19-761
Product name: 2',6-Dichloro-7-methoxyisoflavone
Lot No.: 0406140



```
SOLVENT      cdcl3      ICC-APR-06
NS           15
DS           0
SMH          9561.423 Hz
FIDRES       0.329403 Hz
AQ           1.5279487 sec
RG           2050
DN           50.600 usec
DE           6.00 usec
TE           296.2 K
D1           1.50000000 sec
TDC          1
```

```
***** CHANNEL f1 *****
NUC1         1H
P1           7.50 usec
PL1          2.60 dB
PL1W         6.62534446 W
SFO1         600.3345368 MHz
SI           32768
SF           600.3300138 MHz
WDW          EM
SSB          0
LB           0.30 Hz
GB           0
PC           1.00
```

